

Cello

Adapted from the letters  
of Abigail Adams  
by Sarah White  
(used by permission)

# Letters from Abigail

John Carbon (2001)

## 1. Dear Friend

$\text{♩} = 72$   
**Adagio** 1 pno.

5 *mf*

10 *mp* *mf* tremolo *p* 3 3 3

16 3 3 3 3 3 3 3 3 3 3

19 non trem. cresc. *mf* tremolo *mp* 3 3 3 3 3 3

22 (non trem.) tremolo *cresc.* *mf* 3 3 3 3 3 3 3 3 3 3 3 *dim.*

26 3 3 3 3 3 3 *p* non trem.

29 *espr.* *mp* *dim.* *p*

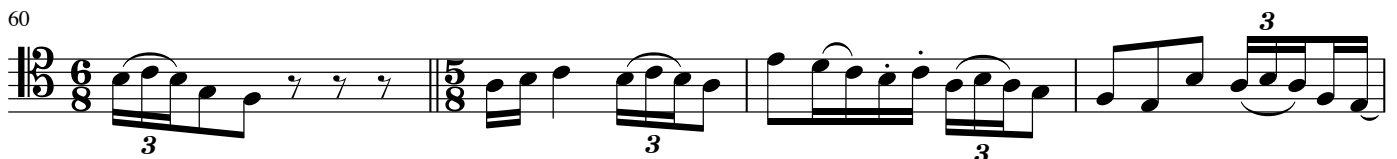
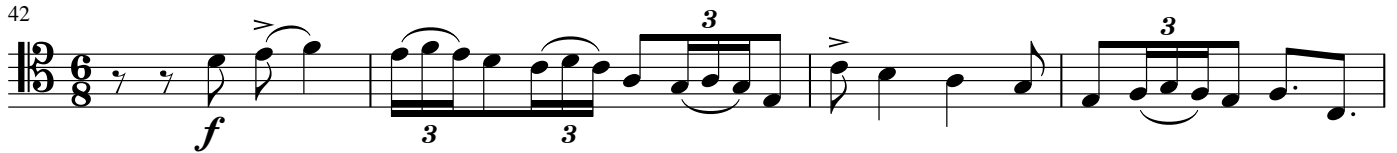
34 *rit.* *dim.* *pp*

♩=80

**Allegro agitato**

## 2. Our Barbarous Foes

pno.



Cello

70

73

76

79

82

84

$\text{♩} = 80$

89

93

96

98

♩=58

## interlude 1

**Grave**

molto rubato e doloroso

mf

103 rit. . . . . A tempo

mp mf

107

f mp

110

mf

113

p pizz. mf

117

120

dim. mp arco p mf

rit. . . . .

124

mp pp

♩=120

interlude 2

**Moderato ed ironicamente**

pno.

*mf* *f*

**Poco piu agitato**

133

pno.

rit. . . . .

139

**A tempo**

143

*mf*

rit. . . . .

146

*mp*

♩=80

Allegro jubilante

## 3. Victory!

The image shows a page of musical notation for a cello part. It consists of ten staves of music, each with a measure number on the left. The music is written in bass clef with a 12/8 time signature. The key signature has two flats (B-flat and E-flat). The score includes various dynamics such as *f*, *mf*, *cresc.*, and *ff*. There are also triplets and accents marked with a > symbol. The music is characterized by rhythmic patterns, often with eighth and sixteenth notes, and some passages with sustained notes or chords.

152 *f*

154 *mf* *cresc.* *f*

156 *cresc.* *ff*

157 *f* 3 3 3 3

159 *f*

160

161 *mp* *cresc.* *f* 3 3 3 3

163

165

Cello

167

*mp* *cresc.*

168

169

*ff*

171

*ff*

173

*ff*

175

*ff*

176

*ff*

178

*mf* *cresc.*

180

*ff*

182

*sfz*

♩=120

## 4. Remember the Ladies...

Allegro con fuoco

pno.

*mf* *fp* *f*

188

pno.

191

*f* *fp* *ff* *mf*

194

196

198

pno.

*f*

201

*fp* *f*

204



Cello

206

*f* *fp* *ff*

209

*f*

211

*cresc.*

213

*cresc.* *ff* rit.

216

*fp* *ff*  $\text{♩} = 80$   
**Meno mosso**

218

*pp* accel.

222

*mp* *cresc.* *mf*

225

$\text{♩} = 120$   
**Tempo primo**

Cello

rit. . . . .

228

*ff* *fp* *ff*

$\text{♩} = 80$   
**Meno mosso**

231

*p*

234

rit. . . . .

238

*pp*

$\text{♩} = 66$   
**Andante amabile**

5. My Heart

pno. cantabile

*mp*

244

248

*mf*

252

*mp*

255

*mf*

259

263

*mp*

266

269

272

277

*rit.*